

# PROGETTO S7

GRES PORCELLANATO . PORCELAIN STONEWARE . GRÈS CÉRAME . FEINSTEINZEUG

LUCIDO, IMPERFETTO, CON COLORI VIBRANTI:  
L'ACCESSORIO CHE ELEVA L'ATMOSFERA DI UN AMBIENTE

GLOSSY, IMPERFECT, WITH VIBRANT COLORS: AN ACCESSORY THAT ELEVATES THE ATMOSPHERE OF AN ENVIRONMENT.  
BRILLANT, IMPARFAIT, AVEC DES COULEURS VIBRANTES: UN ACCESSOIRE QUI ÉLÈVE L'ATMOSPHÈRE D'UN ENVIRONNEMENT.  
GLÄNZEND, IMPERFEKT, MIT VIBRIERENDEN FARBEN: EIN DEKOR, DAS DIE ATMOSPHÄRE EINER UMGEBUNG ERHÖHT.

 **SICHENIA**  
ECCellenza CERAMICA ITALIANA

# PROGETTO S7

SAGGEZZA ARTIGIANALE E INNOVAZIONE SI FONDONO  
PER DARE VITA AD ATMOSFERE ESCLUSIVE.

SKILLED CRAFTSMANSHIP AND INNOVATION: TOGETHER TO CREATE EXCLUSIVE ATMOSPHERES.  
SAVOIR-FAIRE ARTISANAL ET INNOVATION : ENSEMBLE POUR CRÉER DES AMBIANCES EXCLUSIVES.  
HANDWERKSKUNST UND INNOVATION: GEMEINSAM UM EXKLUSIVE ATMOSPHÄREN ZU SCHAFFEN.

# SFUMATURE DI SETTE COLORI E RICERCATA IMPERFEZIONE ESPRIMONO IL VALORE DELLA TRADIZIONE IN CHIAVE CONTEMPORANEA.

SEVEN COLORS AND REFINED IMPERFECTIONS EXPRESS THE VALUE OF TRADITION IN A CONTEMPORARY TASTE.

NUANCES DE SEPT COULEURS ET IMPERFECTIONS RAFFINÉES EXPRIMENT LA VALEUR DE  
LA TRADITION DANS UNE CLÉ CONTEMPORAINE.

SIEBEN FARBEN UND RAFFINIERTE IMPERFEKTIONEN DRÜCKEN DEN WERT DER TRADITION IN EINEM  
ZEITGENÖSSISCHEN GESCHMACK AUS.

BIANCO



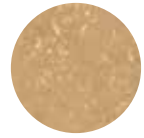
GRIGIO



ROSA



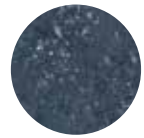
OCRA



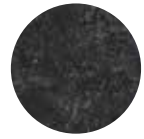
VERDE



BLU



NERO



# GIOCHI DI LUCE, MATERIALI COLORATI E SUPERFICI TATTILI PER RACCONTARE UNA STORIA.

INTERPLAYS OF LIGHT, COLORFUL MATERIALS AND TOUCH SURFACES TO TELL A STORY.

JEUX DE LUMIÈRES, MATIÈRES COLORÉES ET SURFACES TOUCHANTES POUR RACONTER UNE HISTOIRE.

HELL-DUNKEL-EFFEKTE, BUNTE MATERIALIEN UND TOUCH-OBERFLÄCHEN, UM EINE GESCHICHTE ZU ERZÄHLEN.

Sichenia presenta Progetto S7, una linea distintiva che trasferisce la propria energia decorativa agli ambienti. Artigianalità e innovazione si mescolano nuovamente creando prodotti che donano consistenza, forza e brillantezza alle richieste progettuali. Questi effetti sono accentuati dalla particolare struttura leggermente ondulata e dai bordi in rilievo che restituiscono l'unicità delle imperfezioni artigianali, contribuendo a intensificare la sensazione di movimento e brillantezza. La collezione è arricchita dal decoro Bloom, caratterizzato dalle foglie dipinte a mano che si imprime delicatamente sulle superfici bianche. Negli ultimi anni il design punta molto sulle componenti materiche e Progetto S7 è la proposta ideale per elevare tutti i tipi di ambientazioni, residenziali e commerciali. Peculiarità di questa collezione è la sua potenza stilistica. Nata infatti per essere in perfetto abbinamento cromatico con 94\_EVO, ma grazie alla sua grande libertà compositiva può essere utilizzata con l'intera gamma Sichenia.

Sichenia presents Progetto S7, a distinctive collection that transfers its decorative energy to environments. Craftsmanship and innovation are mixed to create products that give consistency, strength and brilliance to design requests. These effects are accentuated by the special slightly wavy surface and by raised edges that gives back the uniqueness of the handcrafted imperfections. This helps to intensify the sensation of movement and brilliance. The collection is enriched by the Bloom decoration, characterized by hand-painted leaves that are lightly imprinted on the white surfaces. In recent years, design focuses on material components and Progetto S7 is the perfect proposal to elevate all types of settings, residential and commercial. Peculiarity of this collection is its stylistic power. Created to match perfectly the serie 94\_EVO, thanks to its great compositional freedom it can be used with the whole Sichenia range.

Sichenia présente Progetto S7, une ligne distinctive qui transfère son énergie décorative aux environnements. Artisanat et Innovation se mélangent à nouveau pour créer des produits qui donnent cohérence, force et brillance aux demandes de conception. Ces effets sont accentués par la structure particulière légèrement ondulée et les bords relevés qui restaurent le caractère unique des imperfections artisanales, contribuant à intensifier la sensation de mouvement et de brillance. La collection est enrichie par la décoration Bloom, caractérisée par des feuilles peintes à la main qui sont délicatement imprimées sur les surfaces blanches. Ces dernières années, la conception s'est fortement concentrée sur les composants matériels et Progetto S7 est la proposition idéale pour élever tous les types d'environnements, résidentiels et commerciaux. La particularité de cette collection est sa puissance stylistique, en effet elle a été créée pour être en parfaite harmonie de couleurs avec 94\_EVO, mais grâce à sa grande liberté de composition elle peut être utilisée avec toute la gamme Sichenia.

Sichenia präsentiert Progetto S7, eine unverwechselbare Kollektion, die ihre dekorative Energie auf Umgebungen überträgt. Handwerkskunst und Innovation werden vermischt, um Produkte zu schaffen, die Designanforderungen Konsistenz, Stärke und Brillanz verleihen. Diese Effekte werden durch die spezielle, leicht gewellte Oberfläche und durch erhöhte Kanten betont, die die Einzigartigkeit der handgefertigten Unvollkommenheiten wiedergeben. Dies hilft, das Gefühl von Bewegung und Brillanz zu intensivieren. Die Kollektion wird durch das Bloom-Dekor bereichert, das sich durch handgemalte Blätter auszeichnet, die leicht auf die weißen Oberflächen gedruckt werden. In den letzten Jahren konzentrierte sich das Design auf Materialkomponenten, und Progetto S7 ist der perfekte Vorschlag, um alle Arten von Umgebungen, Wohn- und Geschäftsräume, zu verbessern. Die Besonderheit dieser Kollektion ist ihre stilistische Kraft. Tatsächlich wurde es so konzipiert, dass es farblich perfekt zu 94\_EVO passt, aber dank seiner großen Komposition Freiheit kann es mit dem gesamten Sichenia-Sortiment verwendet werden.



8x41. 3"x16" Bianco Nat - Glossy



6





8x41.3"x16"  
PROGETTO S7  
Blu Nat - Glossy



8x41.3"x16"  
PROGETTO S7  
Bianco Nat - Glossy



8x41.3"x16"  
PROGETTO S7  
Bloom Nat - Glossy

"BIANCO"





8



16,5x41.6"½x16"  
**PROGETTO S7**  
Grigio Vaschetta  
Nat - Glossy



8x41.3"x16"  
**PROGETTO S7**  
Grigio Nat - Glossy



16,5x41.6"½x16"  
**PROGETTO S7**  
Bianco Vaschetta  
Nat - Glossy



90x90.35"½x35"½  
**94\_EVO**  
Nero Fumo  
Ret - Matt

"GRIGIO"









11



8x41.3"x16"  
PROGETTO S7  
Rosa Nat - Glossy

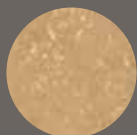


60x120 . 23<sup>3</sup>/<sub>4</sub>x47<sup>1</sup>/<sub>4</sub>  
94\_EVO  
Chéri La Nuit Ret - Matt

"ROSA"



12



8x41.3"x16"  
PROGETTO S7  
Ocra Nat - Glossy



60x60 . 23<sup>3</sup>/<sub>4</sub>x23<sup>3</sup>/<sub>4</sub>  
94\_EVO  
Pigmenti Ret - Matt

"OCRA"











15



16,5x41 . 6<sup>1</sup>/<sub>2</sub>x16"  
**PROGETTO S7**  
Verde Vaschetta Nat - Glossy



60x120 . 23<sup>3</sup>/<sub>4</sub>x47<sup>1</sup>/<sub>4</sub>"  
**94\_EVO**  
Verde di Nicosia Ret - Matt



10x120 . 4"x47<sup>1</sup>/<sub>4</sub>"  
**TRONÇAIS**  
Duna Ret - Matt

“VERDE”



16



8x41. 3"x16"  
PROGETTO S7  
Blu Nat - Glossy

**Utilizzo a pavimento:** solo residenziale a passaggio leggero.  
**Floor use:** for light residential only

"BLU"









8x41.3"x16"  
**PROGETTO S7**  
 Nero Nat - Glossy



60x120 . 23<sup>3</sup>/<sub>4</sub>x47<sup>1</sup>/<sub>4</sub>  
**94\_EVO**  
 Bianco di Spagna Ret - Matt



90x90 . 35<sup>1</sup>/<sub>2</sub>x35<sup>1</sup>/<sub>2</sub>  
**94\_EVO**  
 Bianco di Spagna Ret - Matt



90x90 . 35<sup>1</sup>/<sub>2</sub>x35<sup>1</sup>/<sub>2</sub>  
**94\_EVO 20mm**  
 Bianco di Spagna Ret - Grip

**"NERO"**



# PROGETTO S7

BELLEZZA E COLORE AL DI FUORI DEGLI STILI E DEL TEMPO.

BEAUTY AND COLOR BEYOND STYLES AND BEYOND TIME.

BEAUTÉ ET COULEUR AU-DELÀ DES STYLES ET AU-DELÀ DU TEMPS.

SCHÖNHEIT UND FARBE AUSSERHALB VON STIL UND ZEIT.

20

Rivestimento . Wall Tile:

Collection Pavè Wall Rows Zebrino 30x90 . 12"x35"½ Ret - Muretto

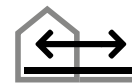
Pavimento . Floor:

Collection 94\_EVO Bianco di Spagna . 90x90 . 35"½x35"½ Ret - Grip 20MM - Gradino / Gradino Angolare Costa Lucida 30x90 . 12"x35"½ Ret - Grip 20MM

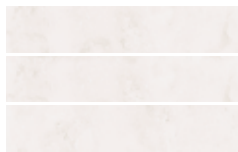
Collection Progetto S7 Blu 8x41 . 3"x16" Nat - Glossy

**Utilizzo a pavimento:** solo residenziale a passaggio leggero.

**Floor use:** for light residential only



## BIANCO

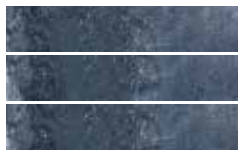


**188891** - 8x41.3"x16"  
Nat - Glossy  
PM - 60,00

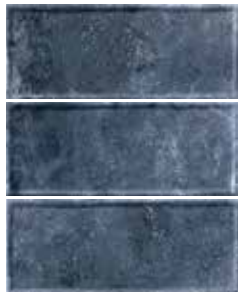


**188901** - 16,5x41.6"½x16"  
Vaschetta Nat - Glossy  
PM - 60,00

## BLU



**188898** - 8x41.3"x16"  
Nat - Glossy  
PM - 60,00



**188908** - 16,5x41.6"½x16"  
Vaschetta Nat - Glossy  
PM - 60,00

## GRIGIO

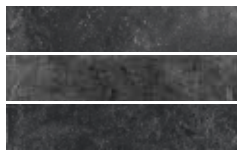


**188892** - 8x41.3"x16"  
Nat - Glossy  
PM - 60,00

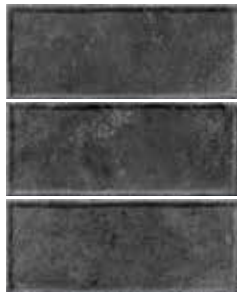


**188902** - 16,5x41.6"½x16"  
Vaschetta Nat - Glossy  
PM - 60,00

## NERO



**188899** - 8x41.3"x16"  
Nat - Glossy  
PM - 60,00



**188909** - 16,5x41.6"½x16"  
Vaschetta Nat - Glossy  
PM - 60,00

## ROSA



**188894** - 8x41.3"x16"  
Nat - Glossy  
PM - 60,00



**188904** - 16,5x41.6"½x16"  
Vaschetta Nat - Glossy  
PM - 60,00

## OCRA



**188895** - 8x41.3"x16"  
Nat - Glossy  
PM - 60,00



**188905** - 16,5x41.6"½x16"  
Vaschetta Nat - Glossy  
PM - 60,00

## DECORO BLOOM



**192421** - 8x41.3"x16"  
Bloom Nat - Glossy  
PM - 63,00

## VERDE



**188896** - 8x41.3"x16"  
Nat - Glossy  
PM - 60,00



**188906** - 16,5x41.6"½x16"  
Vaschetta Nat - Glossy  
PM - 60,00

## PEZZI SPECIALI . SPECIAL PIECES



**Bullnose 8x41.3"x16" Nat - Glossy** PL - 14,00

**193021** - Bianco **193025** - Ocra **193028** - Blu **193024** - Rosa  
**193022** - Grigio **193026** - Verde **193029** - Nero





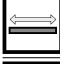



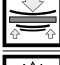





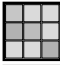



## RIVESTIMENTO IN GRES FINE PORCELLANATO COMPLETAMENTE VETRIFICATO

### FULLY VITRIFIED PORCELAIN STONEWARE WALL TILES

Conforme alla norma EN 14411 1 Appendice G gruppo B1a Conforme alla norma ISO 13006 Appendice G gruppo B1a

Compliant with standards EN 14411 annex G group B1a Compliant with standards ISO 13006 annex G group B1a

<b>CATTERISTICHE TECNICHE</b>		<b>Norma</b>	<b>Valore prescritto dalle norme</b>	<b>Valore Sichenia</b>
Technical features		Standard	Values required by the standard	Sichenia values
	<b>Lunghezza e larghezza</b> Length and width	UNI EN ISO 10545/2	Rettificato . Rectified ± 0,3 % (max ± 1 mm)	Conforme Compliant
	<b>Spessore</b> Thickness	UNI EN ISO 10545/2	Rettificato . Rectified ± 5 % (max ± 0,5 mm)	Conforme Compliant
	<b>Rettilinearità spigoli</b> Warpages of edges	UNI EN ISO 10545/2	Rettificato . Rectified ± 0,3 % (max ± 0,8 mm)	Conforme Compliant
	<b>Ortogonalità</b> Wedging	UNI EN ISO 10545/2	Rettificato . Rectified ± 0,3 % (max ± 1,5 mm)	Conforme Compliant
	<b>Planarità</b> Flatness	UNI EN ISO 10545/2	Rettificato . Rectified ± 0,4 % (max ± 1,8 mm)	Conforme Compliant
	<b>Assorbimento d'acqua</b> Water absorption	UNI EN ISO 10545/3	≤ 0,5 %	≤ 0,1 %
	<b>Resistenza alla flessione</b> Bending strength	UNI EN ISO 10545/4	≥ 35 N/mm <sup>2</sup>	≥ 35 N/mm <sup>2</sup>
	<b>Resistenza aall'abrasione profonda</b> Resistance to deep abrasion	UNI EN ISO 10545-6	≤ 175 mm <sup>3</sup>	-
	<b>Sforzo di rottura</b> Breaking strength	UNI EN ISO 10545/4	≥ 1300 N	spess. 10mm: ≥ 1'300 N
	<b>Dilatazione termica lineare tra 20° e 100° C</b> Linear thermal expansion between 20° and 100° C	UNI EN ISO 10545/8		< 9 (MK-1)
	<b>Resistenza agli sbalzi termici</b> Thermal shock resistance	UNI EN ISO 10545/9	<b>Test superato in accordo con ISO 10545-1</b> Pass according to EN ISO 10545-1	Nessuna alterazione No alteration
	<b>Resistenza al gelo</b> Frost resistance	UNI EN ISO 10545/12	<b>Test superato in accordo con ISO 10545-1</b> Pass according to EN ISO 10545-1	Nessuna alterazione No alteration
	<b>Resistenza alle macchie</b> Resistance to staining	UNI EN ISO 10545/14	<b>Classe dichiarata</b> Declared Class	5 resistente . resistant
	<b>Resistenza ai prodotti chimici di uso domestico e agli additivi per piscina . Resistance to household chemicals and swimming pool salts</b>		<b>Classe minima B</b> Minimum Class B	A
	<b>Resistenza a basse concentrazioni di acidi e alcali</b> Resistance to low concentrations of acids and alkalis	UNI EN ISO 10545/13	<b>Classe dichiarata</b> Declared Class	LA
	<b>Resistenza ad alte concentrazioni di acidi e alcali</b> Resistance to high concentrations of acids and alkalis		<b>Classe dichiarata</b> Declared Class	HA
	<b>Stonalizzazione</b> Shading			V3
	<b>Fuga minima consigliata (*)</b> Recommended minimum joint	indoor		+/- 5mm
		outdoor		+/- 5mm

\* Salvo diversa indicazione dei Codici di Posa Nazionali. La larghezza delle fughe deve comunque essere decisa dalla Direzione Lavori.

\* The width of grout joints must be established by the installation supervisor, unless grout widths are regulated by national laying standards.

## DESTINAZIONI D'USO CONSIGLIATE - RIVESTIMENTO PARETI PER:

Examples of applications suggested - Wall coverings for:

Domaines d'utilisation conseillés - Revêtements pour:

Empfohlene Anwendungsbereiche - Wandfliesen für:



**ABITAZIONI**  
HOUSING



**ALBERGHI**  
HOTELS



**BAR  
RISTORANTI**  
PUB RESTAURANTS



**LOCALI PUBBLICI**  
PUBLIC SPACES



**NEGOZI**  
SHOPS



**AEROPORTI**  
AIRPORTS



**RIVESTIMENTO  
PISCINE**  
INSIDE POOL COVERING



**CENTRI  
COMMERCIALI**  
MALLS

## SVILUPPO GRAFICO / PATTERNS

**V3**



16,5x41 **20** Facce differenti / Different Patterns

8x41 **40** Facce differenti / Different Patterns

8x41 Dec. Bloom **14** Facce differenti / Different Patterns

## FORMATI . Sizes . Formats . Formate

			Pz x	m <sup>2</sup> x	kg x	x	m <sup>2</sup> x	kg x
	<b>16,5x41</b> 6 <sup>1</sup> / <sub>2</sub> x16"	Vaschetta Nat - Glossy	16	1,082	20,940	48	51,955	1.030
	<b>8x41</b> 3"x16"	Nat - Glossy / Bloom Nat - Glossy	22	0,722	17,080	60	43,296	1.045
<b>PEZZI SPECIALI .</b> Special pieces . Pièces spéciales . Spezialteile .	<b>8x41</b> 3"x16"	Bullnose Nat - Glossy	12	0,394	8,400	65	25,584	546

23

MADE IN ITALY



La riproduzione, la pubblicazione, e la distribuzione, totale o parziale, di tutto il materiale originale contenuto in questo documento sono espressamente vietate in assenza di autorizzazione da parte di Sichenia. Sichenia si riserva di modificare i prodotti senza preavviso, declinando ogni responsabilità relativa a danni diretti o indiretti derivanti da tali modifiche. I colori e le caratteristiche estetiche dei materiali illustrati nel presente catalogo sono da ritenersi puramente indicativi. Per le informazioni e i dati relativi ai codici, imballaggi e pesi occorre sempre consultare l'ultimo listino aggiornato e in vigore.

The reproduction, publication, and distribution, total or partial, of all the original material contained herein is expressly prohibited without the prior consent of Sichenia. Sichenia reserves the right to make changes to the products without notice, and shall not be liable for any direct or indirect damages arising from any changes. The colours and the aesthetic characteristics of the products shown in this catalogue are purely illustrative. For information and data concerning codes, packaging and weight always refer to the last updated price list in force.

La reproduction, la publication et la distribution, totales ou partielles, de tout le matériel original contenu dans ce document sont expressément interdites sans l'autorisation de Sichenia. Sichenia se réserve la faculté de modifier les produits sans préavis, en déclinant toute responsabilité relative à des dommages directs ou indirects dérivant d'éventuelles modifications. Les couleurs et les caractéristiques esthétiques du matériel illustré dans ce catalogue sont fournis à titre purement indicatif. Pour les informations et les données relatives aux codes, aux emballages et aux poids, il est toujours nécessaire de consulter le dernier tarif mis à jour et en vigueur.

Die vollständige oder auszugsweise Vervielfältigung, Veröffentlichung und Verbreitung des gesamten, in diesem Dokument enthaltenen Originalmaterials, ist ohne Genehmigung der Firma Sichenia ausdrücklich untersagt. Sichenia behält sich das Recht vor, die Produkte ohne vorherige Ankündigung zu ändern und haftet nicht für direkte oder indirekte, durch eventuelle Änderungen verursachte Schäden. Die Farben und ästhetischen Merkmale des im vorliegenden Katalogs abgebildeten Materials sind rein zur Information und nicht bindend. Für Informationen zu den Daten der Codenummern, Verpackungen und Gewichten siehe immer die neuste, jeweils gültige Preisliste.



Sichenia Gruppo Ceramiche S.p.A.

Via Toscana, 12 - 41049 Sassuolo (Modena) - Italy  
Tel. +39 0536.81.84.11 - Fax Italia +39 0536.81.01.05 / export +39 0536.80.08.15

[info@sichenia.it](mailto:info@sichenia.it) - [www.sichenia.it](http://www.sichenia.it)

